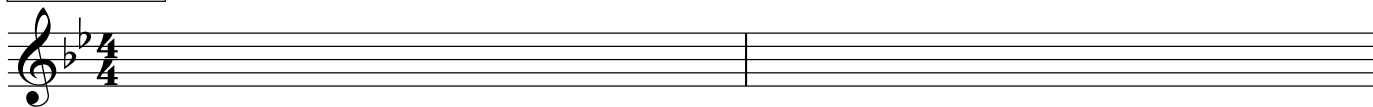


Meteor

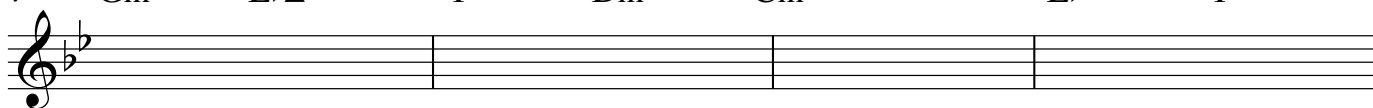
Intro Gm



3 Gm Eb Δ ⁷ F Dm⁷ Eb Cm⁷ F Bb F/A



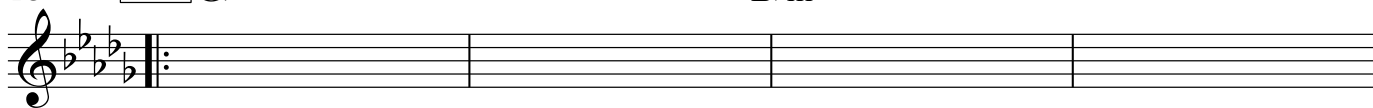
7 Gm Eb Δ ⁷ F Dm⁷ Cm⁷ Eb F



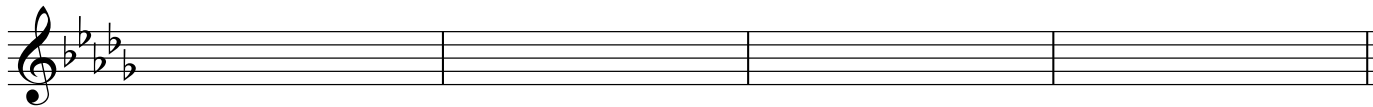
11 Cm Dm Eb Gm F Gm Bb F Eb Δ ⁷ F



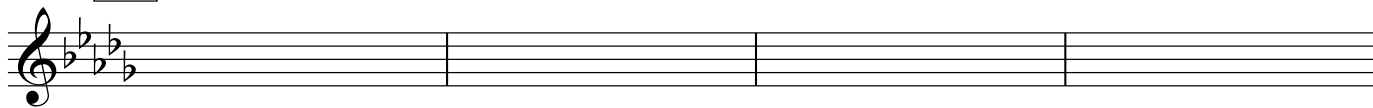
15 A Gb



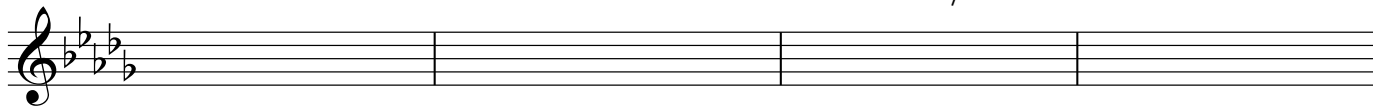
19 Gb Bbm



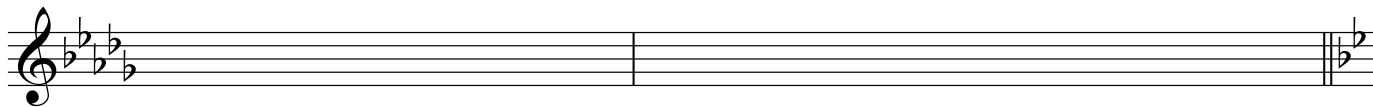
23 B Gb



27 Db Ab Cm F⁷ Bbm Ab Gb Db/F Edim C⁷(b9)



31 F F Eb D⁷



2

33 **C** Gm Eb Δ^7 F Dm 7 Eb Cm 7 F B \flat F/A

37 Gm Eb Δ^7 F Dm 7 Cm 7 Dm 7 Eb F To Coda

41 1. Cm Dm Eb Gm F Gm B \flat F Eb Δ^7 F

Inter

45 2. Cm 7 Dm 7 Eb F G^{sus4} G

49 Cm 7 Dm 7 Eb Δ^7 F^{sus4} F

C'

53 Gm Eb Δ^7 F Dm 7 Eb Cm 7 F B \flat F/A

D.S.

57

Ending

59 Gm Eb Δ^7 F Dm 7 Eb Cm 7 F B \flat F/A

63 Gm Eb Δ^7 F Dm 7 Cm 7 Dm 7 Eb F