

霞ゆく空背にして

Intro

Chord progression for the Intro section:

Staff 1: Eb G

Staff 2: Cm Ab Adim Bb

Staff 3: Eb G Cm Ab

Staff 4: Eb Ab Bb

Staff 5: Ab Eb/G Fm⁷ Eb Ab

Staff 6: Ab Eb/G Fm⁷ Eb

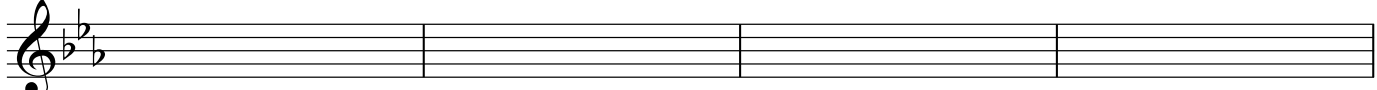
Staff 7: A Eb G Cm Ab

Staff 8: Ab Fm Eb

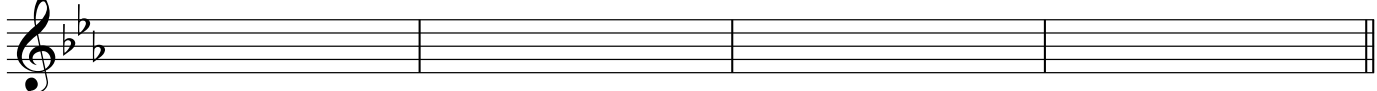
Staff 9: Eb G Cm Ab

Staff 10: Ab Fm Eb G

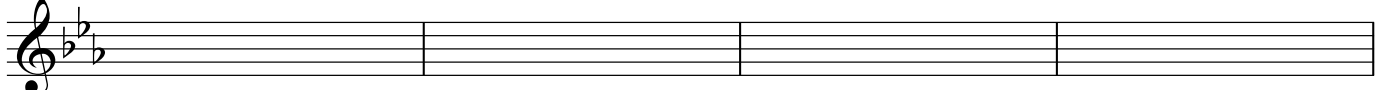
2 39 **B** Cm Baug Eb/Bb F7/A



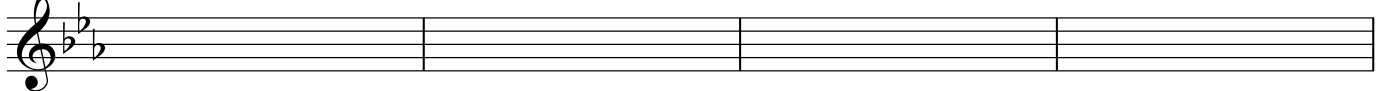
43 1. Ab Bb^{sus4} Bb



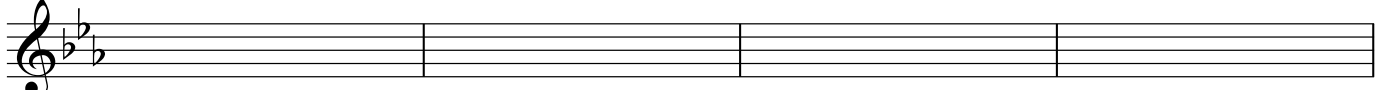
47 **C** Eb G/D /B /D



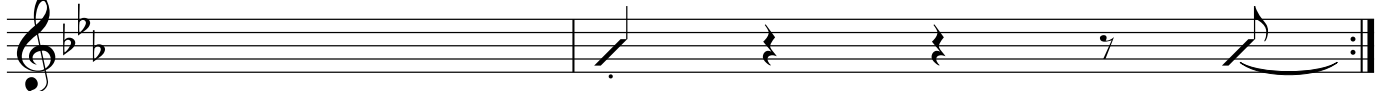
51 Cm Ab Adim Bb



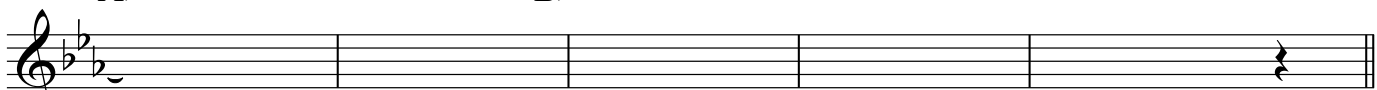
55 Eb G Cm Ab



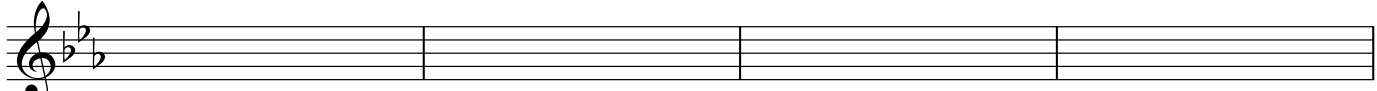
59 Eb Ab To Coda



2. Ab Bb^{sus4}



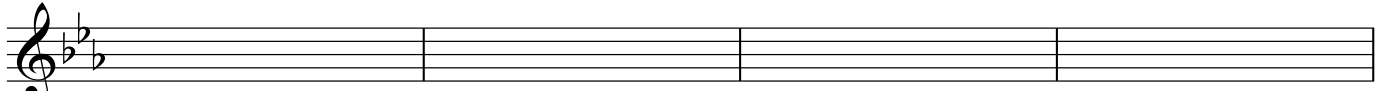
Inter
Eb⁷



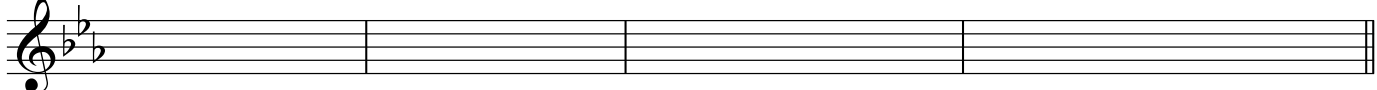
Eb⁷



F⁷



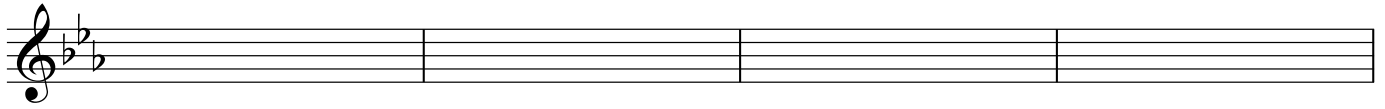
G Ab A Bb B C Db D



C' Eb

G

3

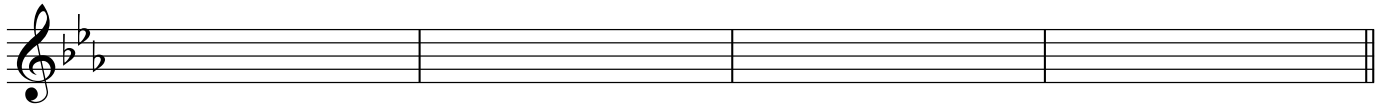


Cm

Ab

Adim

Bb



Eb

G

Cm

Ab



Eb

Ab

Bb

Eb



D.S.

Ending

Ab

Eb/G

Fm7

Eb

Ab



Ab

Eb/G

Fm7

Eb

Ab



Ab

Eb/G

Fm7

Eb

Ab



Ab

Eb/G

Fm7

Eb

